

The logo for the Purple Line, featuring the words "Purple Line" in a stylized, italicized purple font, with a white swoosh underline.

March 18, 2025

Washington Suburban Transit Commission

OUTLINE

PROJECT OVERVIEW

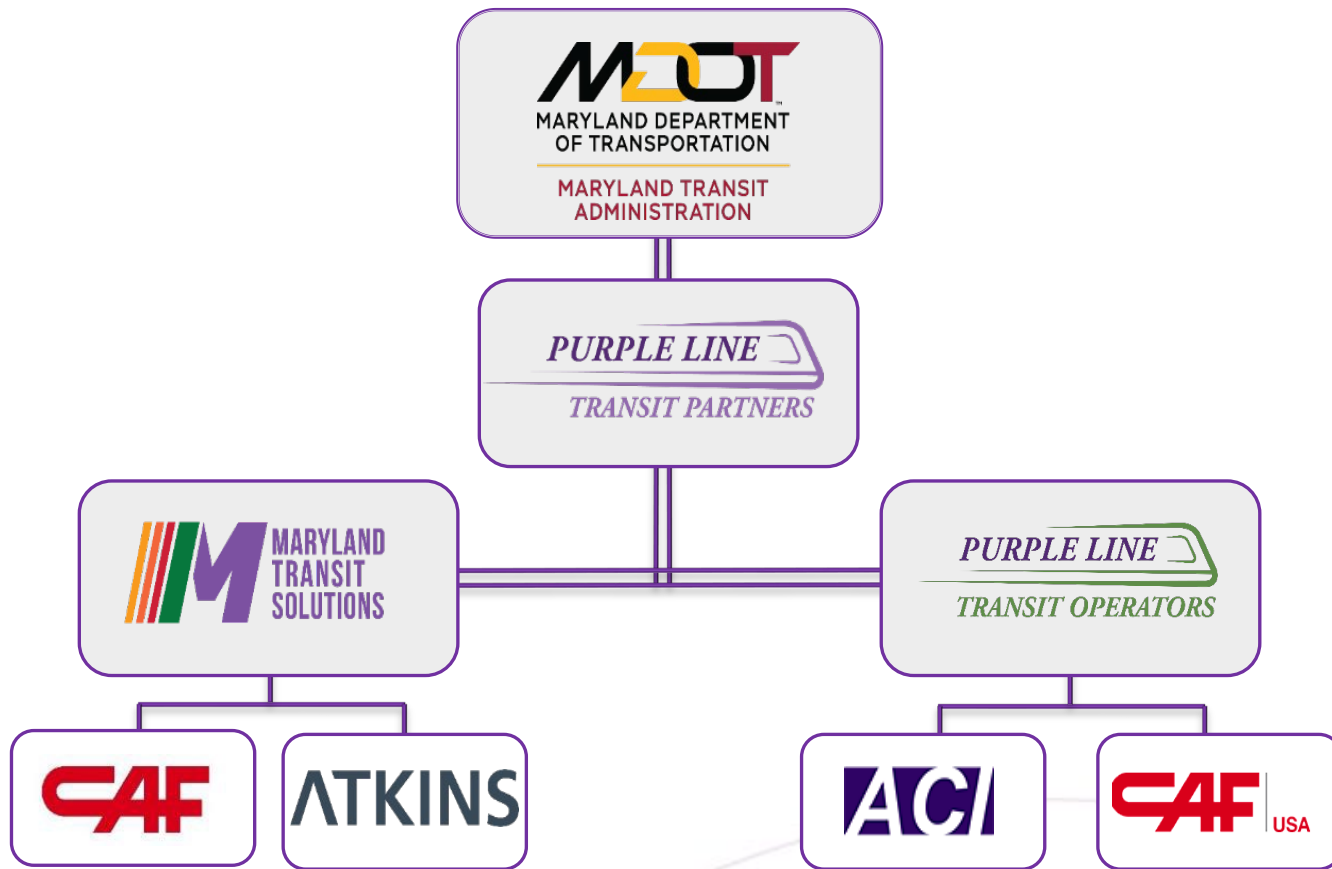
WMATA COORDINATION &
CONSTRUCTION PROGRESS

TESTING

COMMUNITY & BUSINESS
ENGAGEMENT



PUBLIC-PRIVATE PARTNERSHIP (P3)



PROJECT TIMELINE



2022

2023

2024

2025

2026

2027

Spring
MTS
Contract
Signed

Summer
MTS begins
Full-Scale
Construction

Spring
Light Rail
Delivery
to OMF

Summer
Complete
Test Track

Spring
Start
Dynamic
Testing

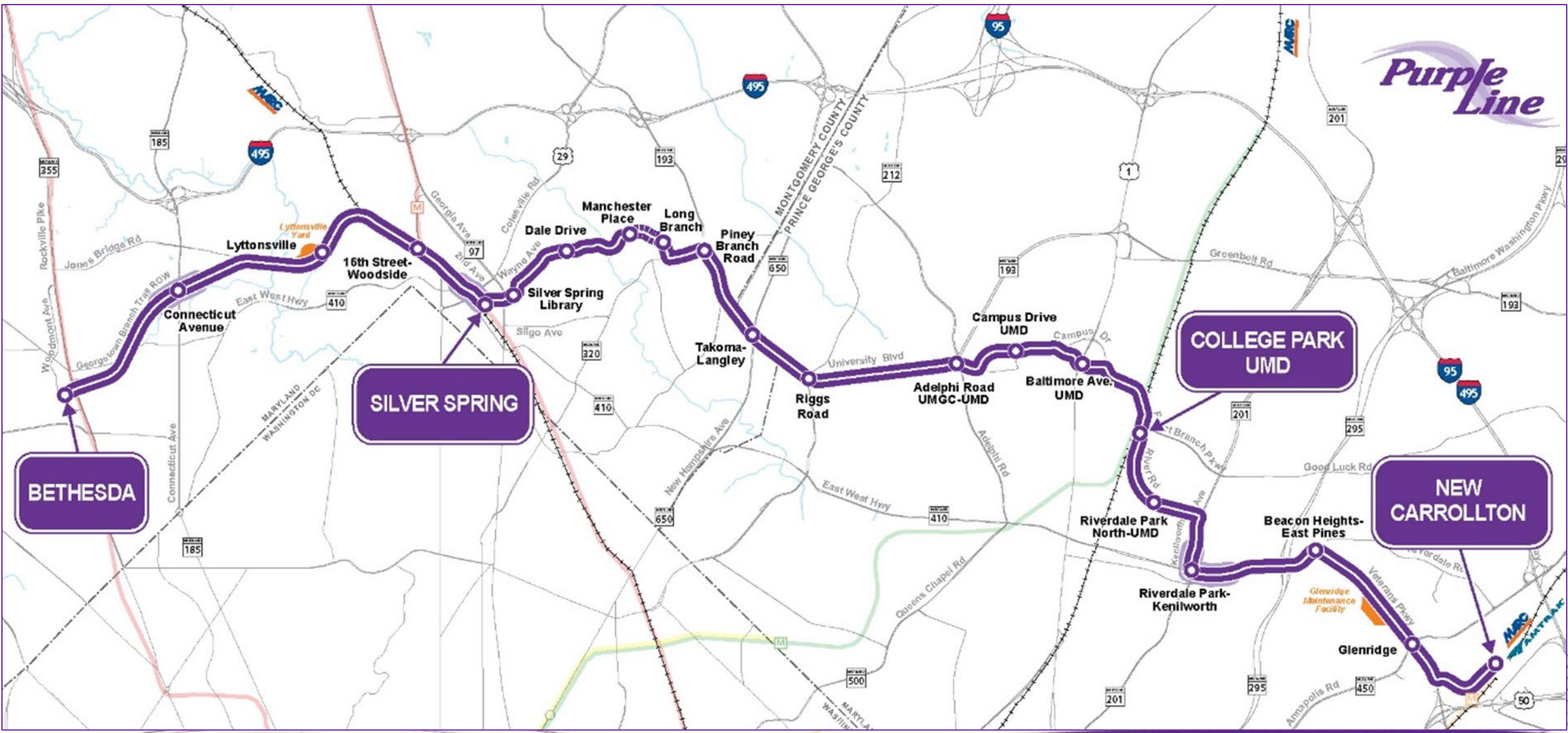
Summer
Complete
Track
Installation

Spring
Start
End-to-End
System
Testing

Winter
Passenger
Service
Begins



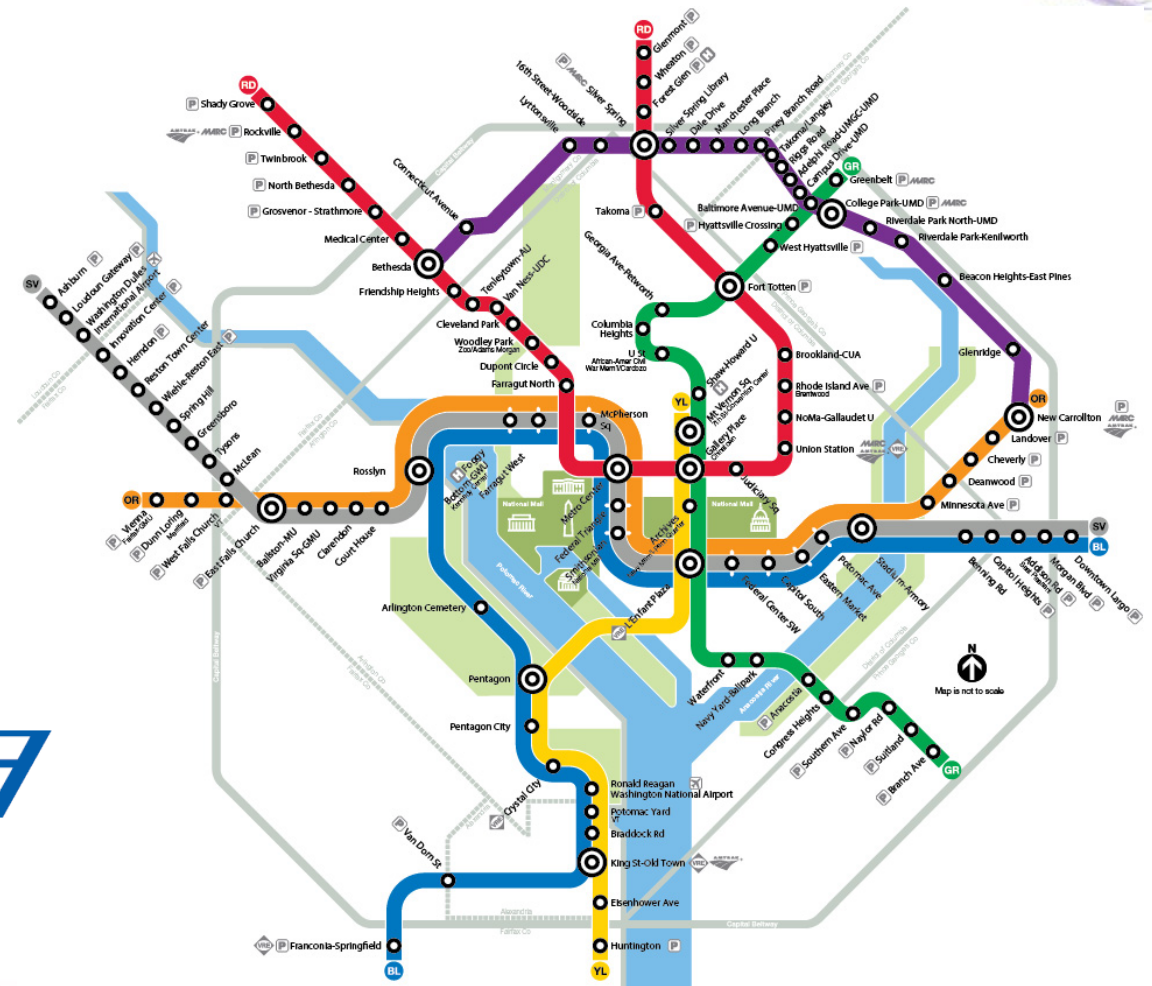
PROJECT ALIGNMENT



MAP

Connects with:

- WMATA, 4 Metrorail Stations
- MARC Commuter Rail Lines
- Amtrak NE Corridor
- Regional and local buses



SYSTEM FARE



FARE VALIDATORS



FARE VENDING MACHINES



FARE MEDIA



CharmPass

- SmarTrip will be accepted.
- MTA continues to study fare structure for the Purple Line.

LIGHT RAIL VEHICLES



- 142 foot 5-section articulated vehicles.
- 8 of 28 light rail vehicles have been delivered to the Operations and Maintenance Facility; delivery will continue in 2025.
- **Over 400+** total capacity with 80 seats available.
- Flex space and folding seats allow for **8 wheelchairs** and **8 bicycles** to be stored.
- Low floor with wide doorways for easy boarding.



Interior view of Purple Line Light Rail Vehicle (Jul. 2024)

PROJECT ACCOMPLISHMENTS



- 35% of track complete.
- Several miles of sidewalk complete.
- 20 of 21 stations are under construction.
- 12 station canopies installed.
- Project is more than 75% complete.
- Opened Talbot Avenue Bridge in May 2024.
- Significant advancement of Kenilworth flyover and Riverdale Park Kenilworth station.



*Track Installation on Campus Drive at Metro College Park Station
(Feb. 2025)*

CONSTRUCTION

WMATA COORDINATION

- Bethesda
- Silver Spring
- College Park
- New Carrollton



Metro Mezzanine Escalator and Canopy Frame installation at the Silver Spring Transit Center (Feb. 2025)

WMATA COORDINATION

Team meets regularly with WMATA Weekly

- Bethesda Check-in.
- Silver Spring Check-in.
- College Park/New Carrollton Check-in.
- Quality Control Meeting

Bi-Weekly

- All Areas Project-level Coordination Meeting.
- WMATA/MTA Catch-up (high level).
- Bethesda Station South Mezzanine WMATA Design Coordination Meeting.



Mezzanine Girder Installation across Metro tracks at the Silver Spring Transit Center (Mar. 2025)

BETHESDA STATION AND ELEVATOR SHAFT



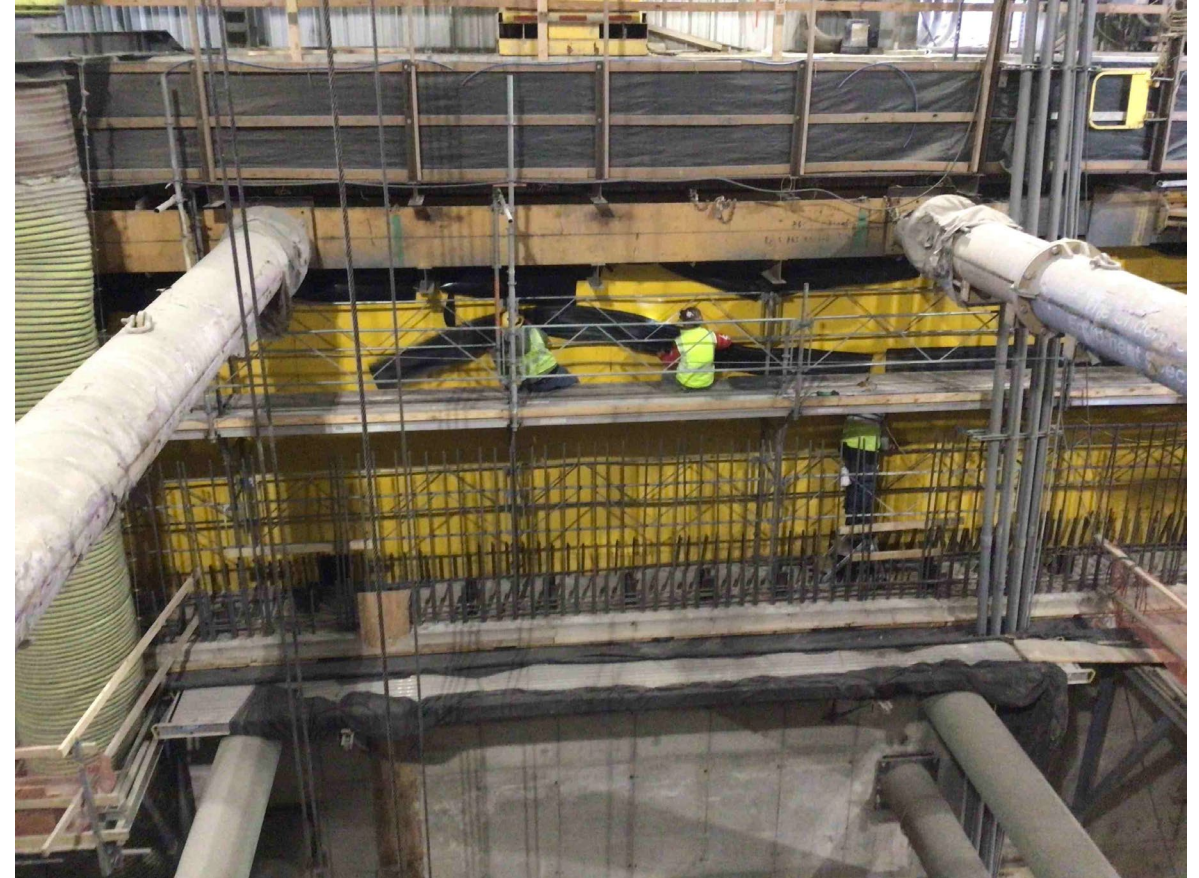
Western Terminus

Recent and Ongoing Work:

- Continued coordination with WMATA Mezzanine Project.
- Completed cavern arch concrete.
- Station platform, escalators and stairs completed and preparation for track installation continues.

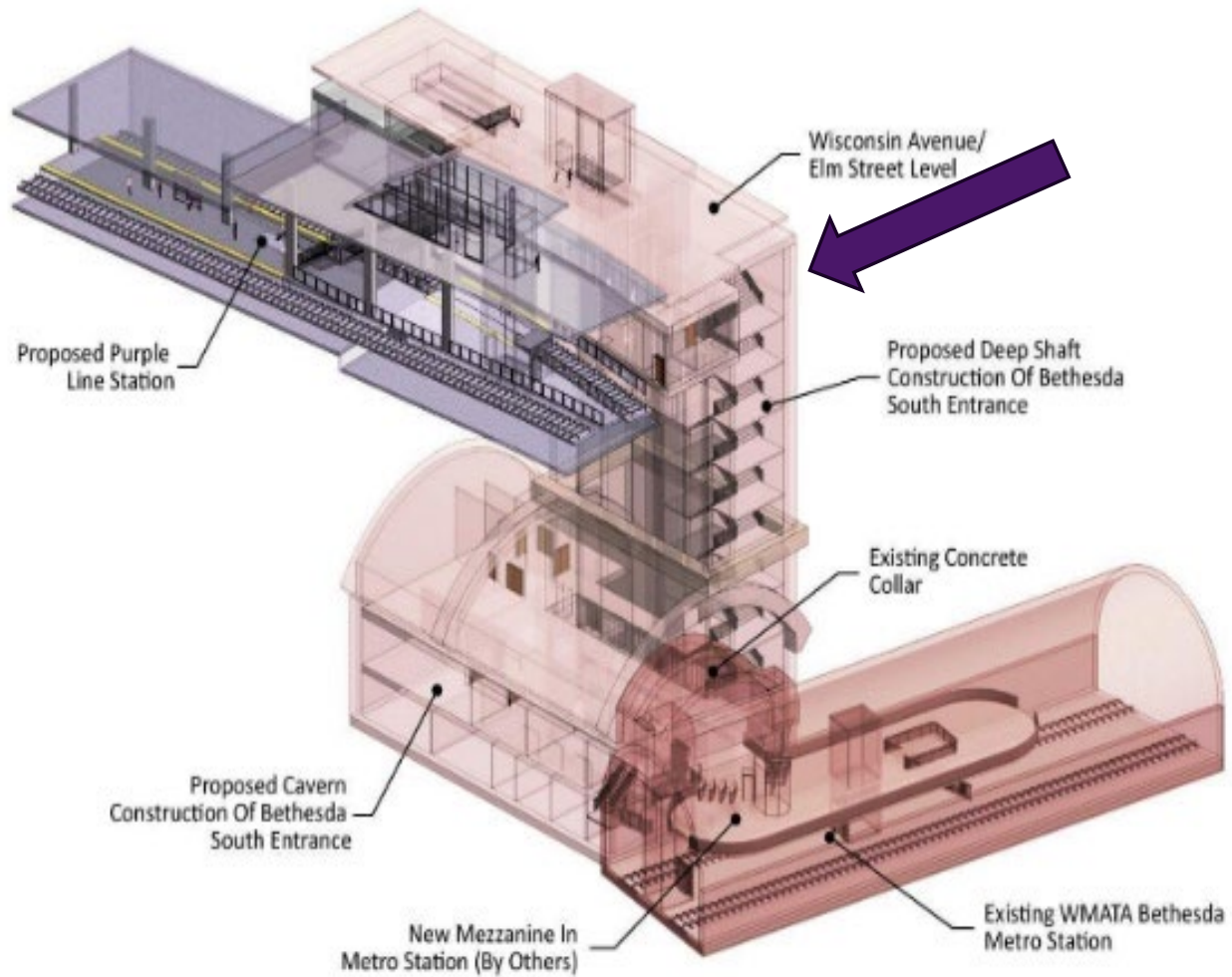
Upcoming Work:

- Complete blasting and excavation for the shaft in the spring.
- Start installation of elevators and other mechanical equipment.
- Install track through the Bethesda enclosed trainway.



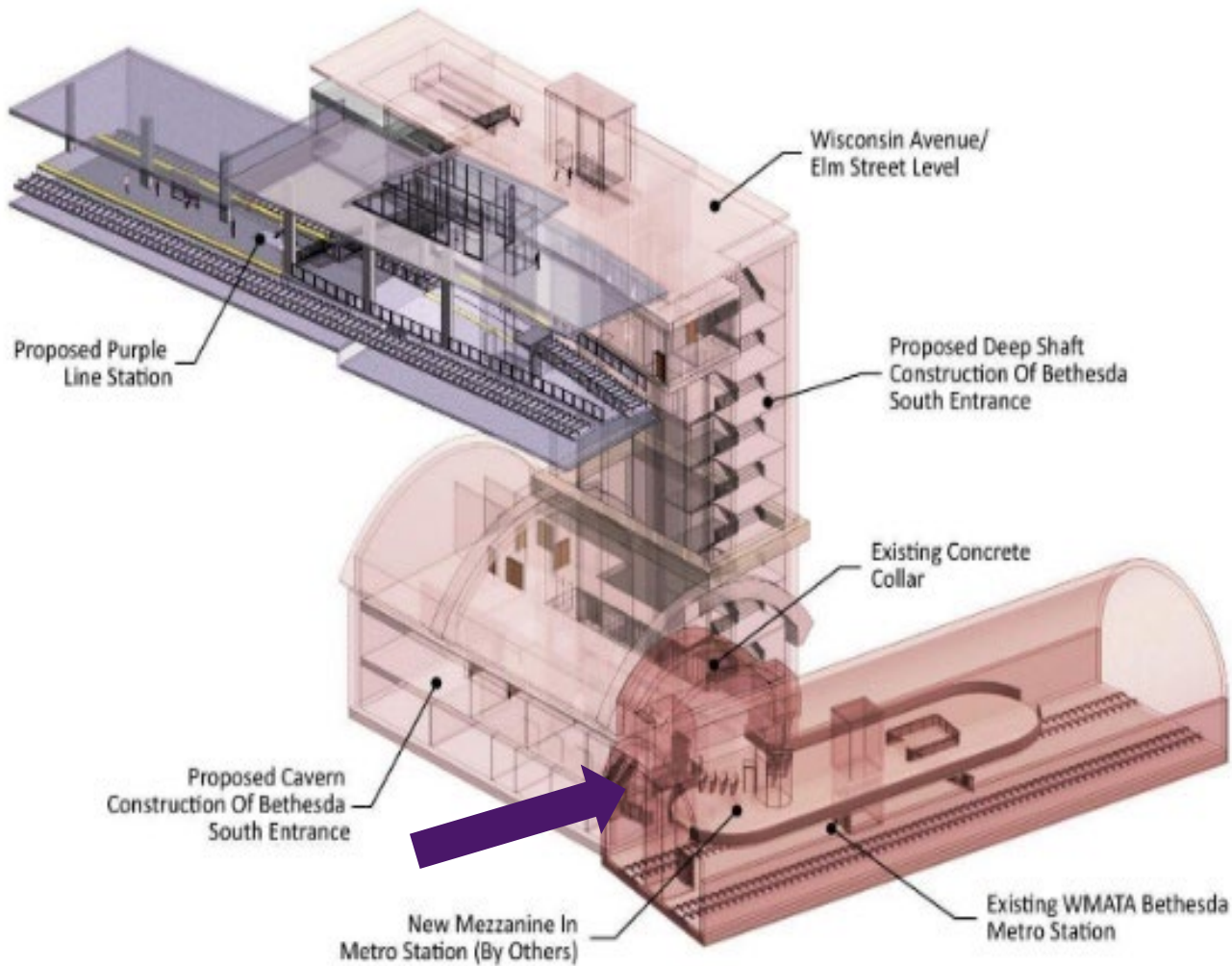
Bethesda Shaft Waterproofing Installation (Mar. 2025)

WMATA BETHESDA SOUTH ENTRANCE



*Construction of Bethesda South Station Entrance underway.
Cavern arch concrete completed.*

WMATA BETHESDA MEZZANINE



Bethesda Cavern Arc Support Work (Feb. 2025)

SILVER SPRING TRANSIT CENTER

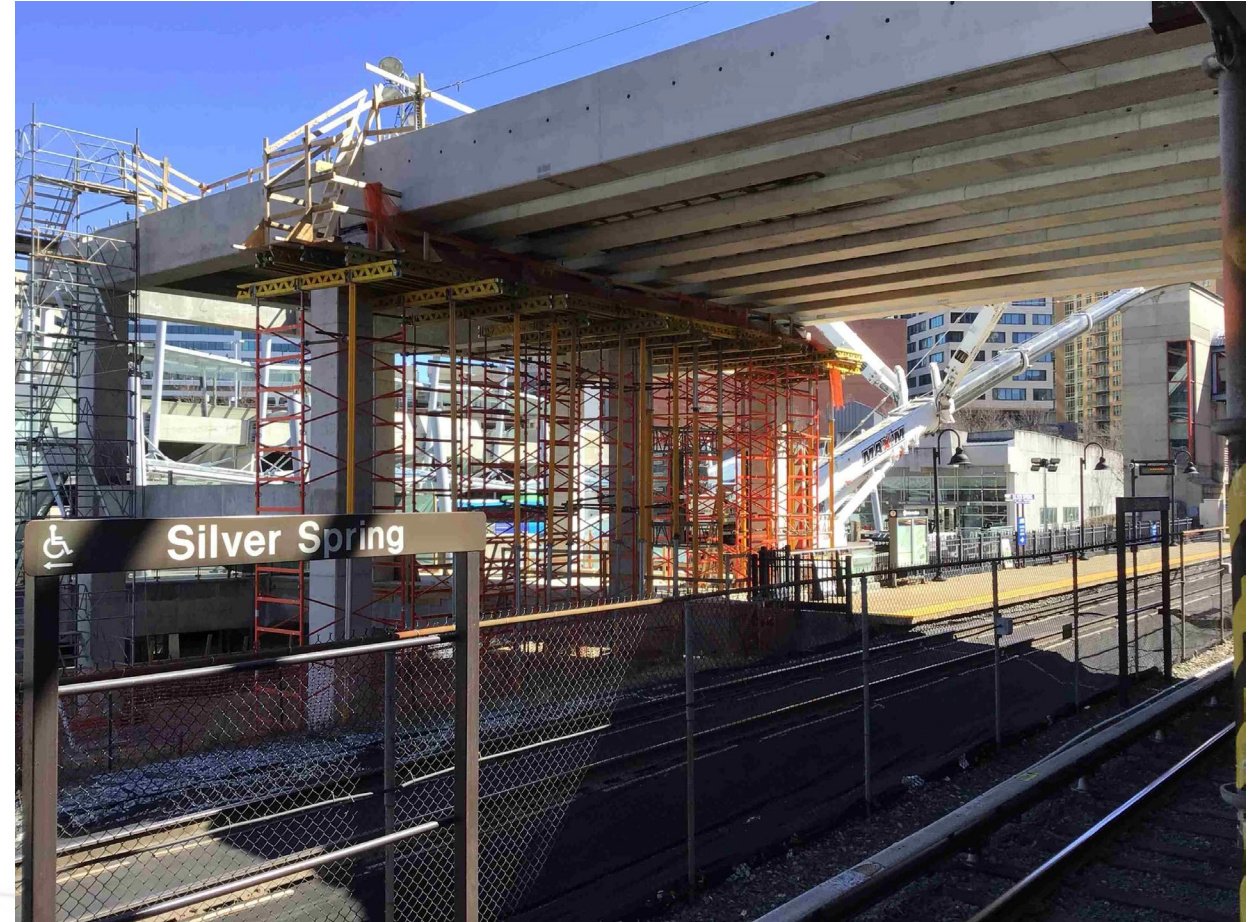


Recent and Ongoing Work:

- Mezzanine girders installed across Metro Red Line platform.
- Silver Spring Station platforms, windscreen and canopies are complete.

Upcoming Work:

- Continue installation of station elements.
- Complete stair and elevator tower construction.



*Metro Mezzanine Girder Installation, Silver Spring Transit Center
(Mar. 2025)*

SPRING STREET BRIDGE

Recent Work

- New pier 1 Micropiles ongoing.
- New pier 2 construction ongoing.
- Continue utility relocation and CSX coordination.

Upcoming

- Old pier 1 removal to be completed in Spring 2025.
- Coordinate with Montgomery County to open bridge to traffic.
- Bridge completion expected in second half of 2025.



Construction of new pier 2, Spring Street Bridge (Feb. 2025)

COLLEGE PARK METRO – CAMPUS DRIVE



Recent and Ongoing Work:

- Complete track installation from underpass to Metro station area.
- Complete utility installation.
- Completed track installation along College Park Metro station.

Upcoming Work:

- Finish track installation where the temporary garage access was located.



Paving at College Park Metro Garage entrance (Feb. 2025)

COLLEGE PARK – UMD STATION



Recent and Ongoing Work:

- Completed station platform.
- Installed canopy.
- Installation of Traction Power Substation.
- Direct fixation track 80% completed.

Upcoming Work:

- Continue station elements.
- Continue track placement.



Track placement and College Park UMD Station construction underway. (Feb. 2025)

NEW CARROLLTON STATION



Eastern Terminus

Recent and Ongoing Work:

- Completed new temporary bus loop.
- Began foundations for new station.
- Installed utilities.
- Installed walls along tracks.

Upcoming Work:

- Continue station construction.
- Continue track installation.
- Continue sidewalks and curbs.

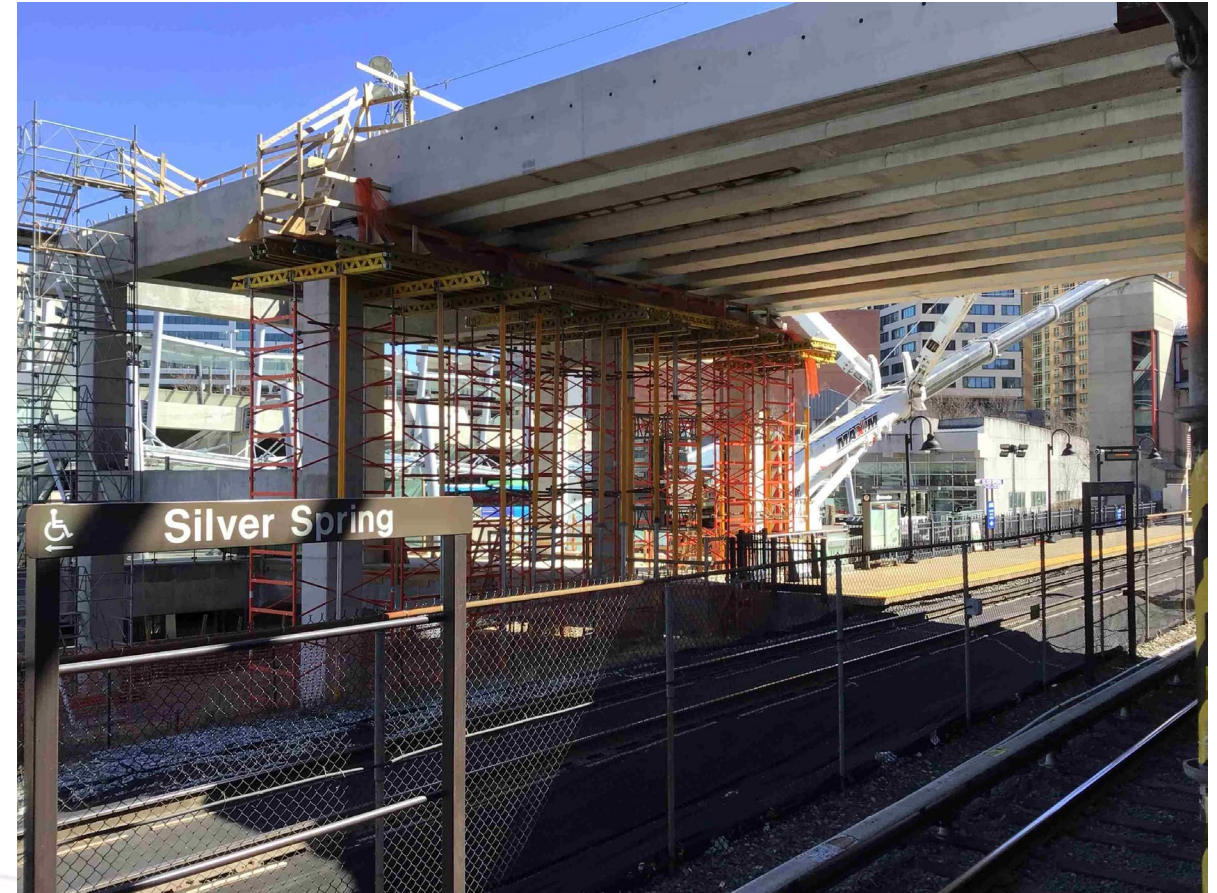


Purple Line Station Construction of New Carrollton (Feb. 2025)

CONSTRUCTION MILESTONES



- Completion of Bethesda Shaft Excavation.
- Finalization of Bethesda South Entrance Design.
- Installation of Silver Spring Mezzanine Superstructure.
- Completion of Finishes at College Park Metro Station.
- Installation of Mechanical/Electrical/Communications Systems at New Carrollton Platform.



*Mezzanine Girder Installation at the Metro Red Line,
Silver Spring Transit Center (Mar. 2025)*

LIGHT RAIL VEHICLE TESTING



Test Track Location

- Adjacent to the Glenridge Operations and Maintenance Facility.
- 1 mile – Parallel to Veterans Parkway (MD 410) between Annapolis Road & Riverdale Road.

Testing Train Systems

- Test Track will be utilized for dynamic running tests of the trains.

Operations & Maintenance Facility

- Purple Line Transit Operators have taken over management and operation of the OMF and will support Dynamic Testing.



Light Rail Vehicle at the Operations and Maintenance Facility (Feb. 2025)

COMMUNITY OUTREACH & BUSINESS ENGAGEMENT



- **Outreach Team** attends dozens of events in-person throughout the year.
- **Early alerts** about construction activities that may impact businesses are provided in English and Spanish.
- Purple Line Transit Partners awarded 8 **Beyond the Rails** grants in January 2025.
- MDOT **Small Business Grants Program** launched on February 10, to support businesses impacted by construction.
- **Spring Community Advisory Team (CAT) Meetings** begin April 22, open to the public.



Register for Construction Updates:
[Purplelinemd.com](https://purplelinemd.com)

Email Us:

outreach@purplelinemd.com

business@purplelinemd.com

media@purplelinemd.com

Call Us:

443-451-3706 / 443-451-3705 (Español)

Follow Us:

[@purplelinemd](https://twitter.com/purplelinemd)

